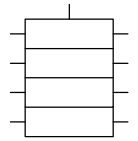




VP33/B

VP33/A

VP33/A
VP33/B



Block progressive distributor from 6 to 20 outlets

VP33/A - 0,07 cm³/stroke - 304.000.000
 VP33/B - 0,20 cm³/stroke - 304.100.000

General aspects

Distributors from series VP33 have been designed to be built as single block and they are suitable for use in central lubrication systems with grease or oil.

They operate according to the progressive system delivering the lubricant provided through the inlet towards the outlets.

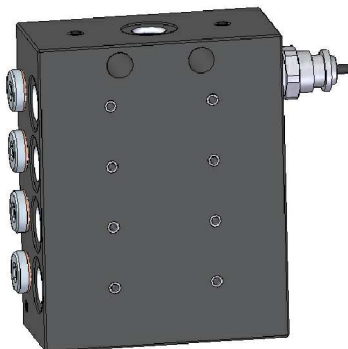
Depending on the stroke and outlet, 2 models are made:

- VP33/A with 0,07cm³
- VP33/B with 0,20cm³

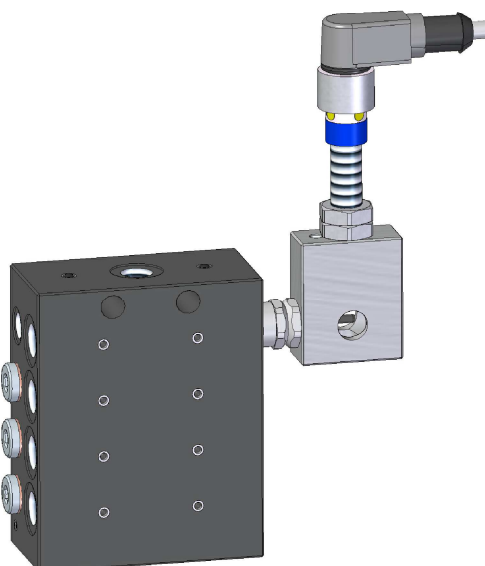
This ratio can be increased by combining outlets (plugging, bridging, etc.)

Options for monitoring:

- visual check
- electrical check with microswitch
- electrical check with inductive sensor



Visual check



Electrical check with inductive sensor

Technical data

Output flow rate:

Model VP33/A 0,07 cm³/stroke
 Model VP33/B 0,20 cm³/stroke

Material..... steel with treated surface

Lubricants:

- oil..... from 30 cSt
- grease..... up to NLGI 2

Working pressure..... 6 ÷ 150 bar

Maximum number of cycles..... 200/minute

Working temperature..... -20°C ÷ + 80°C

Maximum inlet flow:

- oil..... 500 cm³/minute
- grease..... 10 cm³/minute

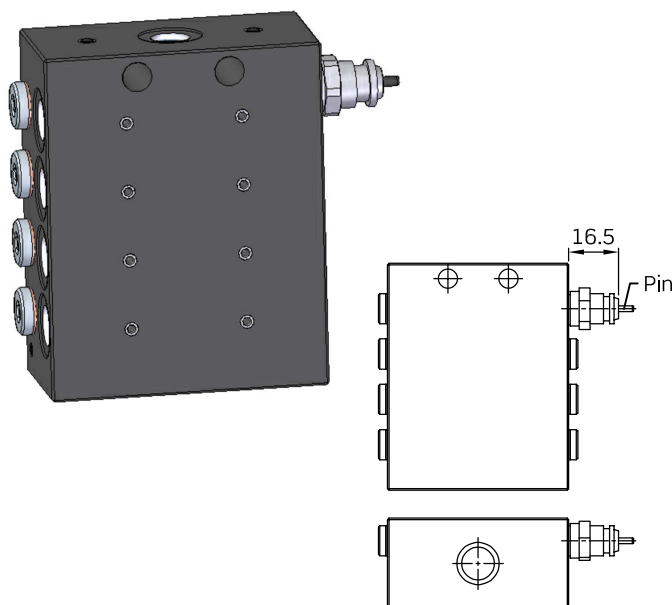
Threaded connections:

VP33/Ainlet G 1/8 DIN 3852
outlets M8x1 Ø4 DIN 2367

VP33/Binlet G 1/8 DIN 3852
outlets M10x1 Ø6 DIN 2367

Sistemas de vigilancia

El sistema de vigilancia se monta de fábrica junta a la primera salida del lado derecho (la más cercana a la entrada, en el lado R).



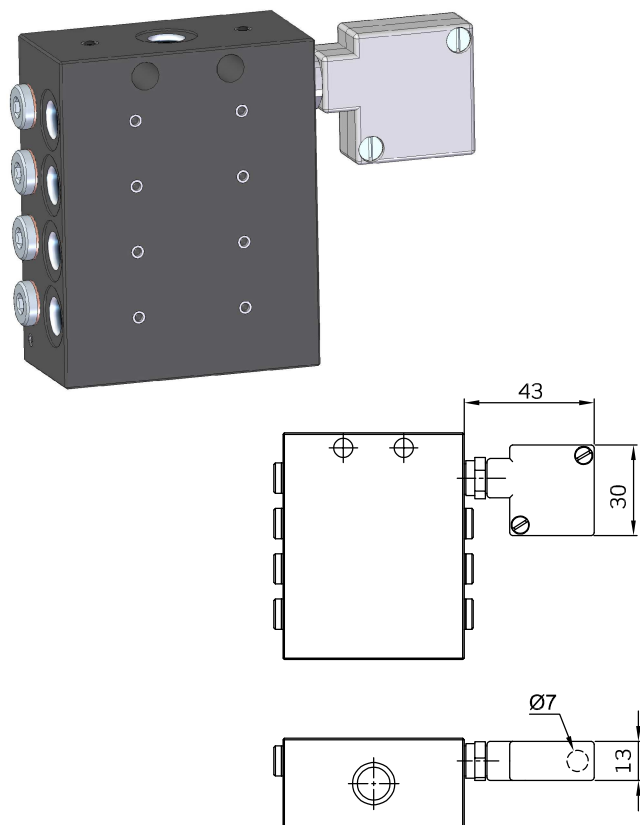
Vigilancia visual

El movimiento de un pin solidario con el pistón dosificador exterioriza sus movimientos y permite un control visual del correcto funcionamiento de toda la instalación.

Sobre este soporte de control visual se puede montar posteriormente una vigilancia con micro IP40

Importante: el control visual no es un elemento de suministro post-venta, es precisa su incorporación en origen en fábrica

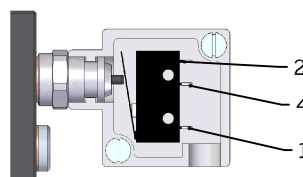
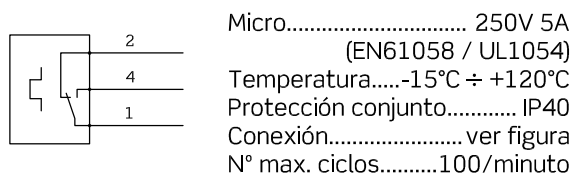
Temperatura funcionamiento.....-15°C ÷ +120°C

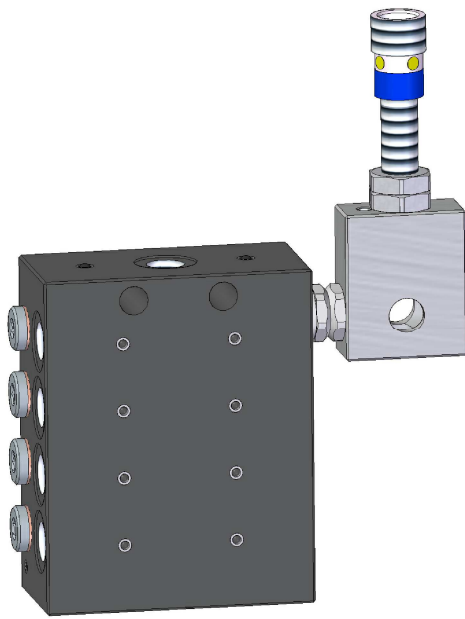


Vigilancia eléctrica con micro (IP40)

Consiste en una caja de aluminio con tapa, en cuyo interior se aloja un microinterruptor y que es accionado por el movimiento de un pin solidario con el pistón dosificador.

El conjunto se adapta al soporte del control visual "1"

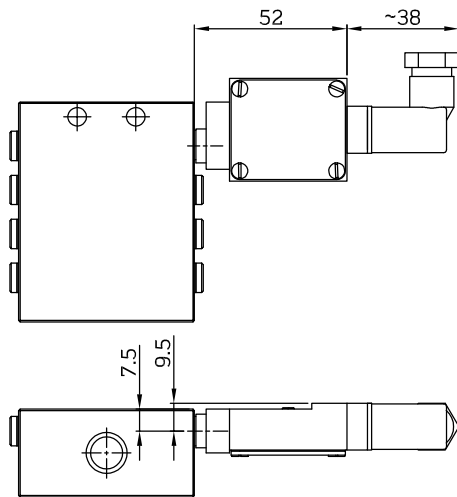
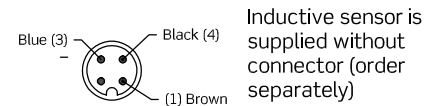
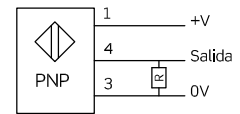
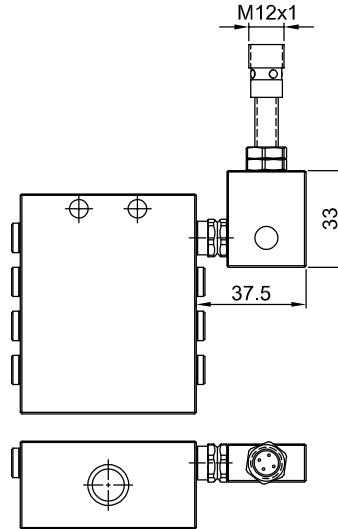




Electrical monitoring (inductive sensor)

It consists of an anodized aluminium body that incorporates an inductive sensor and detects the motion of a pin connected to the internal piston opening and closing the contact.

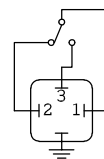
Function..... NO
 Voltage..... 10 ÷ 30V
 Max. load admitted..... 200 mA
 Protection..... IP65
 Temperature..... -10°C ÷ +70°C
 Connection.....connector M12 4 poles
 Max. number cycles..... 500/minute



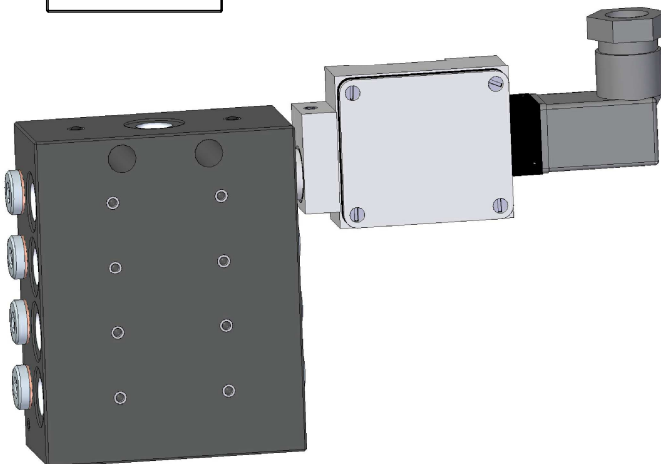
Electrical monitoring with micro (IP65)

It consists of an aluminium box with a cover and a microswitch inside that is driven through the movement of a pin connected to the internal piston.

Note: available only for size VP33/B








Micro..... 250V 5A (EN61058 / UL1054)
 Temperature..... -15°C ÷ +120°C
 Protection degree..... IP65
 Connection..... DIN43650 3 poles PG7
 Max. number cycles.....100/minute



References for orders:

VP33 / X - 1 / X / X X / R=.... L=.... (add when outlet combination is required)

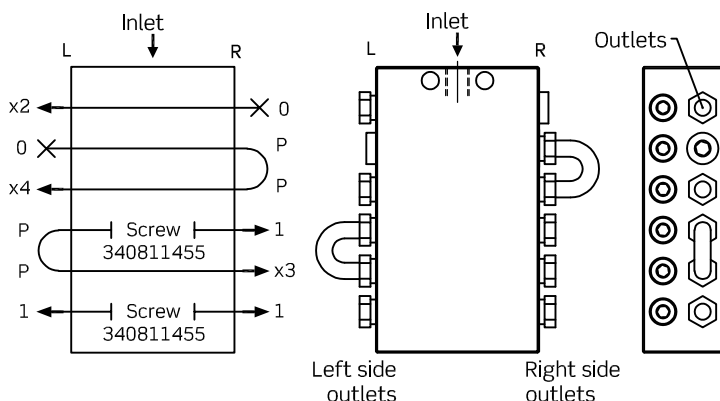
X	Flow	N° of outlets	X	Outlets fittings	X	Monitoring system	X	
A	0,07 cm ³ /stroke	6 outlets	3	Without	0	Without	0	
		8 outlets	4	M8x1 Ø4 DIN 2367 	Ø4 nylon pipe	5	Visual	1
					Ø4 rigid pipe	6		
		10 outlets	5	Straight quick coupling 	Ø4	R4	Micro IP40	2
					Check valve	M-H M8x1		
B	0,2 cm ³ /stroke	12 outlets	6	Without	0	Without	0	
		14 outlets	7	M10x1 Ø6 DIN 2367 	Ø6 nylon pipe	5	Visual	1
					Ø6 rigid pipe	6		
		16 outlets	8	Straight quick coupling 	Ø4	R4	Micro IP40	2
					Ø6	R6		
		18 outlets	9	Elbow quick coupling 	Ø4	C4	Inductive sensor	3
					Ø6	C6		
20 outlets	10	Check valve	M-H M10x1	A	Micro IP65	5		

The monitoring system is factory assembled next to the first outlet on the right side (nearest to the inlet on side R).

Outlet combination

When the points to be lubricated are similar in size and/or consumption it is enough simply to connect each outlet to a point however if you would like to supply proportionally a higher flow rate to a point you will achieve this by bridging some outlets and trying combinations between them to reach the required flow rates.

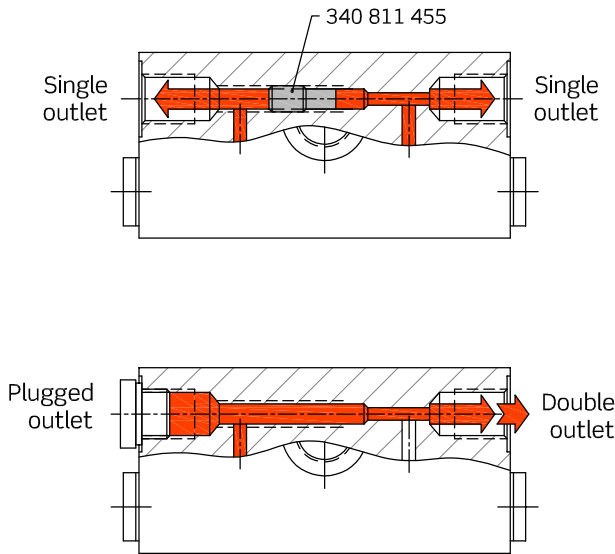
We identify right side outlets as "R" and left side outlets as "L" (see diagram).



- 0 = Plugged outlet
- P = Outlet with bridge
- 1 = Simple outlet
- 2 = Outlet with double flow rate
- 3 = Outlet with triple flow rate
- 4 = Outlet with quadruple flow rate

Order example
Progressive distributor, 0,2cm³ model, with fittings and 12 combined outlets as per diagram

VP33/B-1/6-50 / L-2/0/4/P/P/1-R-0/P/P/1/3/1

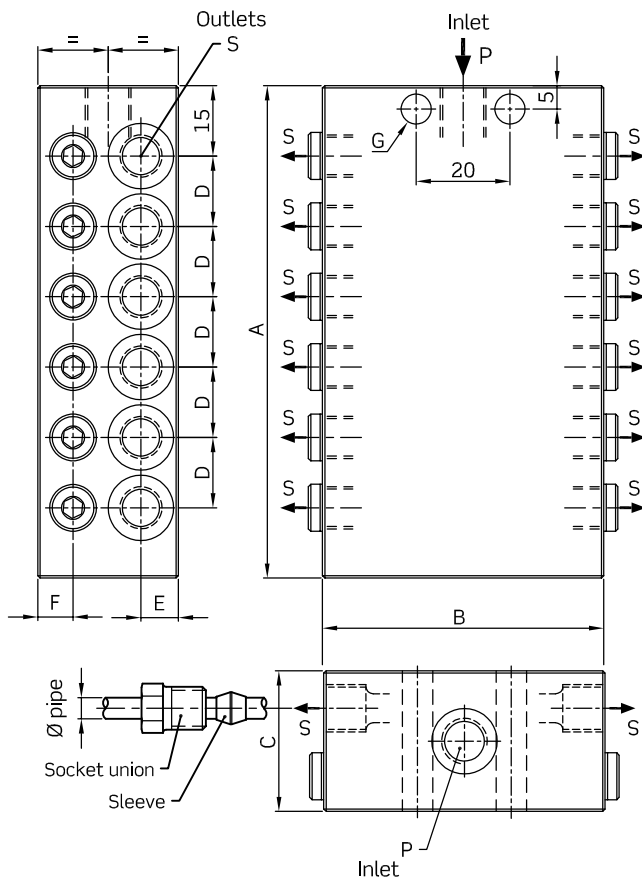


Outlet combination

Before plugging any outlet, the screw ref. 340.811.455 accommodated within the conduit that corresponds to that outlet, must be loosened and removed.
 (Use an Allen key number 2 for this purpose).

Important:

Do not plug any outlet without having removed the locking screw, otherwise the distributor **will be blocked** and will stop working.



Dimensions

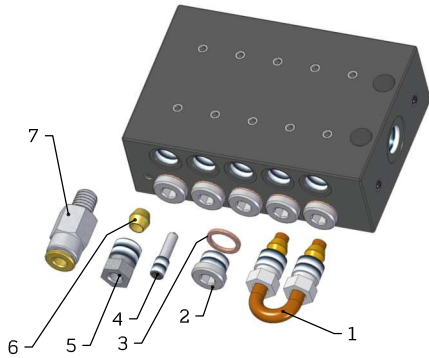
Model	N° of outlets	A	B	C	D	E	7	G
VP33/A	6	50,5	50	25	11,5	6,5	6,5	Ø5,5
	8	62						
	10	73,5						
	12	85						
	14	96,5						
	16	108						
	18	119,5						
VP33/B	6	60	60	30	15	8	7,5	Ø6,5
	8	75						
	10	90						
	12	105						
	14	120						
	16	135						
	18	150						
	20	165						

Threads

Model	P Inlet	S Outlets	Outlet pipe Ø
VP33/A	G 1/8 DIN 3852	M8x1 DIN 2367	Ø4
VP33/B	G 1/8 DIN 3852	M10x1 DIN 2367	Ø6

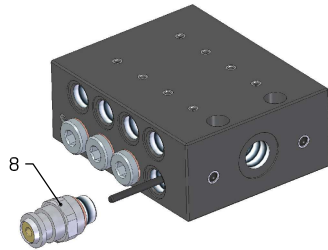
VP33/A

Accesories and spare parts



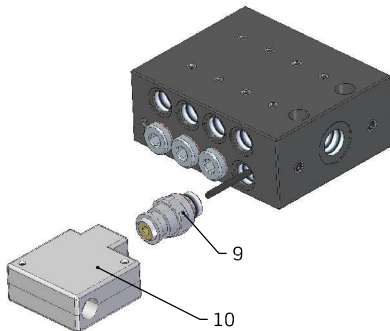
Pos.	Reference	Description
1	956 400 001	Bridge unit M8x1
2	955 701 211	Outlet plug M8x1
3	956 601 054	Whaser Ø8
4	340 811 455	Z screw
5	955 100 040	Socket union M8x1
6	955 200 040	Sleeve for rigid pipe Ø4
	955 204 040	Sleeve for nylon pipe Ø4
7	954 100 043	Straight quick coupling M8x1 Ø4
	954 100 063	Straight quick coupling M8x1 Ø6

Visual check



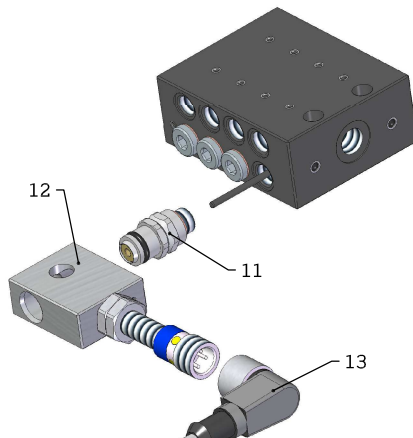
Pos.	Reference	Description
8	341 010 000	Bracket for visual control

Electrical check with microswitch (IP40)



Pos.	Reference	Description
9	341 010 000	Bracket for microswitch (IP40)
10	341 110 000	Box with microswitch (IP40)
	943 401 001	Microswitch

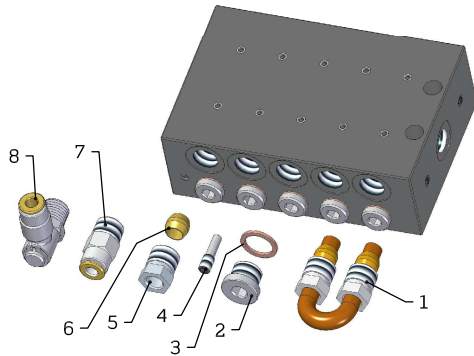
Electrical check with inductive sensor



Pos.	Reference	Description
11	341 020 000	Bracket for inductive sensor
12	341 210 000	Box without inductive sensor
	341 225 000	Box with inductive sensor
	913 901 040	Inductive sensor
13	913 806 607/ 5m	M12x1 elbow connector, 5m cable

VP33/B

Accesorios y repuestos

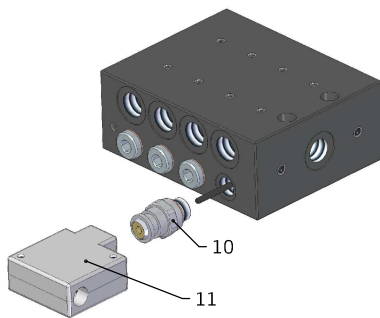


Pos.	Referencia	Descripción
1	956 400 002	Conjunto puente M10x1
2	955 701 222	Tapón cierre salida M10x1
3	956 601 051	Arandela de cierre Ø10
4	340 811 455	Tornillo Z
5	955 100 060	Racor interior M10x1
6	955 200 060	Bicono para tubo rígido Ø6
	955 204 060	Bicono para tubo nylon Ø6
7	954 100 044	Racor recto enchufe rápido M10x1 Ø4
	954 100 064	Racor recto enchufe rápido M10x1 Ø6
8	954 300 044	Codo orientable enchufe rápido M10x1 Ø4
	954 300 064	Codo orientable enchufe rápido M10x1 Ø6



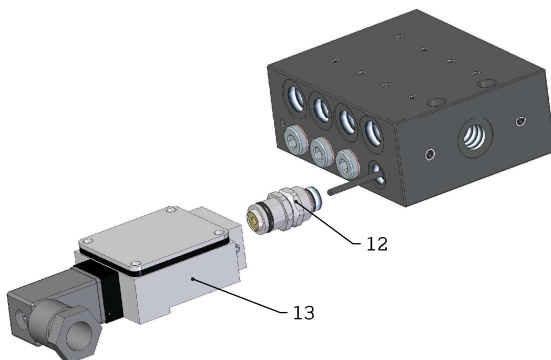
Vigilancia visual

Pos.	Referencia	Descripción
9	341 010 000	Racor soporte para control visual



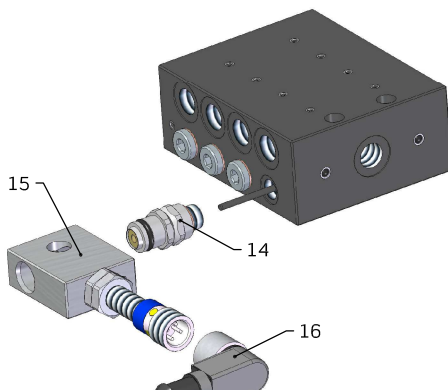
Vigilancia eléctrica con micro (IP40)

Pos.	Referencia	Descripción
10	341 010 000	Racor soporte para control por micro (IP40)
11	341 110 000	Caja con microinterruptor (IP40)
	943 401 001	Repuesto microinterruptor



Vigilancia eléctrica con micro (IP65)

Pos.	Referencia	Descripción
12	341 020 000	Racor soporte para control por micro (IP65)
13	341 120 000	Caja con microinterruptor y conector
	943 401 001	Repuesto microinterruptor



Vigilancia eléctrica con sensor inductivo

Pos.	Referencia	Descripción
14	341 020 000	Racor soporte para control inductivo
15	341 210 000	Caja sin sensor inductivo
	341 225 000	Caja con sensor inductivo
	913 901 040	Respuesto sensor inductivo
16	913 806 607/ 5m	Conector acodado M12x1 cable 5m